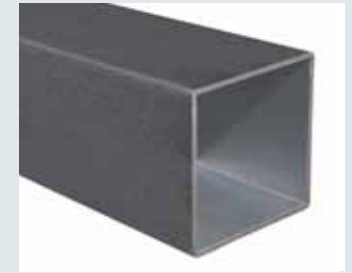






Aluminium



Alu Poker/Double

- I Struttura modulare in alluminio composta da 2 (Double) o 4 (Poker) ombrelloni ancorati ad un unico sostegno studiata per la copertura di ampie superfici con il minimo ingombro.
- UK Aluminium structure made of 2 (Double) or 4 (Poker) parasols fixed at the same pole, suitable for big surfaces and minimum encumbrance.
- D Alustruktur mit 2 (Double) oder 4 (Poker) Schirmen, die am selben Mast befestigt sind. Raumsparend und fuer grosse Flaechen geeignet.
- F Structure en aluminium avec 2 (Double) ou 4 (Poker) parasols fixés à un mat. Pour grandes surfaces avec encombrement minimum.
- E Estructura modular de aluminio compuesta por 2(doble) o 4 (poker) parasoles unidos por un solo mástil, muy adecuado para amplias superficies con poco espacio.
- NL Parasolmast met 2 (Double) of 4 (Poker) parasols. Deze parasols (Double ca. 25 m² en Poker ca. 50 m²) zijn aan 1 mast bevestigd. Zijn daardoor ruimtebesparend en ze er geschikt voor grotere oppervlakten en terrassen.



40. Alu Poker / Double

I

Struttura robusta composta da 4 ombrelloni (Poker) oppure da 2 ombrelloni (Double). Telaio in alluminio e componenti in acciaio; verniciato a polveri colore antracite. Accessori in nylon.

F

Structure robuste avec 4 parasols (Poker) ou 2 parasols (Double). Armature en aluminium vernis, composants en acier couleur gris anthracite. Accessoires en nylon.

UK

Strong structure made of 4 cantilever parasols (Poker) or 2 cantilever parasols (Double). Frame in coated aluminium and steel components powder coated anthracite grey. Accessories made of nylon.

E

Estructura robusta que se compone de 4 parasoles (Poker) – 2 parasoles (Double). Herrajes: Aluminio y acero color gris antracita. Accesorios de nylon.

D

Starke Struktur mit 4 Pendelschirmen (Poker) oder 2 Pendelschirmen (Double). Gestell aus pulverbeschichtetem Aluminium und Bestandteile aus Stahl Farbe Anthrazitgrau. Zubehoer aus Nylon.

NL

Zware mast met 4 (Poker) – 2 (Double) vrijhangende parasols: Mast en baleinen: Grijs geëpoxeerd aluminium. Overige metalen delen: Grijs geëpoxeerd staal.

	COD	MEASURES		CHARACTERISTICS					
		KG	MP						
6,0x6,0	C6060 APO	170	1,00	120x120	ALU DARK	ALU DARK	18x30		
7,0x7,0	C7070 APO	185	1,00	120x120	ALU DARK	ALU DARK	18x30		
3,0x6,0	C3060 ADO	100	0,80	120x120	ALU DARK	ALU DARK	18x30		
3,5x7,0	C3570 ADO	110	0,80	120x120	ALU DARK	ALU DARK	18x30		



SCOLARO Mario & Fabio srl

Via Liguria, 197 - 35040 Casale di Scodosia (PD)
 ITALY - TEL. +39 0429 656687 - FAX. +39 0429 657874
 info@scolaro-parasol.it - www.scolaro-parasol.it

FINISHING						COLOUR RANGE							OPTIONAL				BASES				
					INOX	ACRYL 350 GR								GOLD			N°2 BC5151 N°6 BC5050	N°4 BC5151 N°12 BC5050	N°2 BV5050	N°4 BV5050	FISSAGGIO TERRA INGROUND FIX
						A1	A1	A2	A3	A6	A7	S1									
•	•	•	•	•	•								•	-	•	•	/		/		
•	•	•	•	•	•								•	-	•	•	/		/		
•	•	•	•	•	•								•	-	•	•	/		/		
•	•	•	•	•	•								•	-	•	•	/		/		

TELAIO: Interamente in alluminio e acciaio verniciati a polveri colore grigio antracite. Sostegno verticale sez. 120x120 mm. Stecche in alluminio sezione 18x30 mm , facilmente intercambiabili abbinare al nuovo sistema di corone in plastica (brevettato Scolaro) per aumentare la resistenza e durata, semplificare la manutenzione e migliorare il design. Con aggancio singolo dedicato per ogni stecca.

Tutti gli accessori sono zincati antiruggine e verniciati a polveri colore antracite

Apertura e chiusura con meccanismo a manovella con elegante cornice coprifilo. Stecca blocco antivento per rendere l'ombrellone più stabile e resistente in caso di vento.

Inclusa base in metallo.

TESSUTO: Acrilico Dralon 350gr/m2 impermeabilizzato e trattato antimuffa garantito Teflon. Con camino antivento. Con o senza volant.

FRAME: Aluminum and steel structure epoxy coated anthracite color. Side post section 120x120 mm. Easily interchangeable strong aluminum ribs, section 18x30 , with a new plastic crown (patented by Scolaro) in order to increase the resistance and timing, simplify the maintenance and to improve the design.

Ribs are properly fixed to the crown one by one. All components are epoxy coated anthracite color.

Easy opening and closing with crank mechanism, whose steel wire is covered by a smart covering. With wind stop rib for a better stability of the parasol in windy condition. Metallic base is included.

FABRIC: Acrylic Dralon 350gr/m2 waterproof Teflon and anti-mold treated. With wind cap. Available with and without valance.



.Dimensione (metri)
 .Dimensions (meters)
 .Masse (Meter)
 .Dimensions (metrès)
 .Dimensiones (en metros)
 .Afmeting in (meters)



.Stecche
 .Ribs
 .Streben
 .Baleines
 .Varillas
 .Baleinen



.Piastrre cemento
 .Cement slabs
 .Kiesbetonplatten
 .Dalles ciment
 .Planchas de cemento
 .Betontegel



.Viteria in inox e ottone nichelato
 .Screws in Stainless steel and nickel plated brass
 .Edelstahlschrauben und vernickeltes Messing
 .Visserie inox et laiton nickelé
 .Tornillos en acero inoxidable y bronce niquelado
 .Schroeven van rvs en vernikkeld messing



.Codice
 .Code
 .Artikelcode
 .Code
 .Código
 .Artikelcode



.Set canaline
 .Raingutter set
 .Regerinnen
 .Set gouttières
 .Canalizador Lluvias
 .Set regengoten



.Fodero
 .Cover bag
 .Schutzhuelle
 .Housse
 .Forro
 .Afdekhoes



.Tipo finitura della struttura/sostegno/componenti
 .Finishing for frame/structure/components
 .Ausführung des Gestells/der Struktur/der Bestandteile
 .Finition armature/structure/composants
 .Tipo de acabado de la estructura/Soportes/componente

Pag. 66



.Lunghezza
 .Length
 .Laenge
 .Longueur
 .Longitud
 .Lengte



.Con base/supporo
 .With base/support
 .Mit Staender/Huelse
 .Avec base/support
 .Con base/ soporte
 .Inclusief standaard



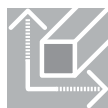
.Doppia carrucola
 .Double pulley
 .Doppelter Seilzug
 .Double poulie
 .Doble polea
 .Dubbelle katrollen



.Colore dei componenti/stecche
 .Component/Ribs colour
 .Farbe der Bestandteile und Streben
 .Couleur des composants et baleines
 .Color de los componentes ò piezas/Varillas ò listones



.Peso
 .Weight
 .Gewicht
 .Poids
 .Peso
 .Gewicht



.Sezione stecche
 .Rib section
 .Strebenprofil
 .Section baleines
 .Sección varillas
 .Profiel baleinen



.Sistema telescopico
 .Telescopic system
 .Teleskopsystem
 .Système telescopique
 .Sistema telescópico
 .Telescoop systeem



.Stecca con sistema "easy change"
 .Ribs with "easy change" system
 .Streben mit "easy change" System
 .Baleines avec "easy change" système
 .Varillas con sistema de " cambio fácil"
 .Baleinen met het "easy change" systeem



.Volume (m3)
 .Volume (m3)
 .Volumen (m3)
 .Volume (m3)
 .Volumen (m3)
 .Volume (m3)



.Camino antivento
 .Wind cap
 .Windfang
 .Souffle
 .Chimenea antiviento
 .Windvang



.Sistema retrattile
 .Retractile system
 .Einziehbares System
 .Système retractile
 .Sistema retráctil
 .Inklapbaar systeem



.Ø Palo (mm)
 .Ø Pole (mm)
 .Ø Mast (mm)
 .Ø Mat (mm)
 .Diametro mm (asta)
 .Ø Mast (mm)



.Volant
 .Valance
 .Volant
 .Volant
 .Volant
 .Faldón
 .Volant



.Base girevole a 360°C
 .Revolving base 360°C
 .360°C drehbarer Staender
 .Base tournant 360°C
 .Base giratoria 360°
 .360° draaibaar



.Massima Stabilità Ottenibile
 .Maximum Obtainable Stability
 .Maximal Erhaeltliche Stabilitaet
 .Maximum De Stabilité Realisable
 .Maxima Estabilidad Posible
 .Maximaal Bereikbare Stabiteit



.Sezione sostegno (mm)
 .Support section (mm)
 .Mastprofil (mm)
 .Section support (mm)
 .Sección soporte (mm)
 .Mast (mm)



.Blocco antivento
 .Wind stop
 .Windstop
 .Block antivent
 .Freno para el viento
 .Windstop



.Inclinazione fino a 20°
 .Inclination up to 20°
 .Neigung bis zu 20°
 .Inclination jusqu'à 20°
 .Inclinación hasta 20°



.Peso consigliato in condizioni normali
 .Recommended weight in normal condition
 .Empfohlenes gewicht unter normalen bedingungen
 .Poids recommande dans des conditions normales
 .Peso recomendado en condiciones normales
 .Aanbevolen gewicht onder normale omstandigheden



.Ottomatatura
 .Brassfinishing
 .Vermessigungen
 .Laiton doré
 .Terminaciones doradas
 .Koper beslag



.Con meccanismo manovella
 .With winding mechanism
 .Mit Kurbelmechanismus
 .Avec mécanisme manivelle
 .Con manivela
 .Met opwindmechanisme



.Inclinazione fino a 60°
 .Inclination up to 60°
 .Neigung bis zu 60°
 .Inclination jusqu'à 60°
 .Inclinación hasta 60°



.Peso minimo richiesto
 .Minimum ballast required
 .Erforderliches mindestgewicht
 .Poids minimum requis
 .Peso minimo requerido
 .Minimaal vereist gewicht