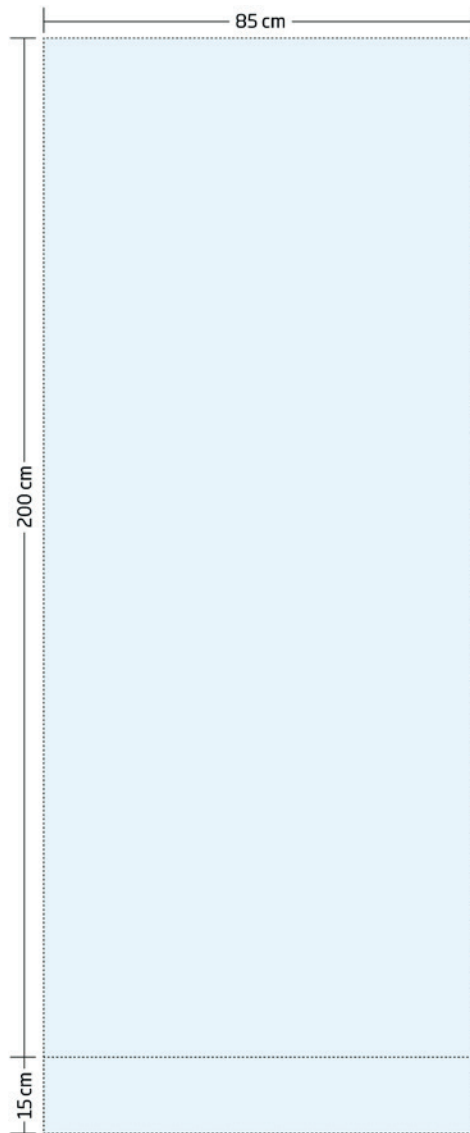
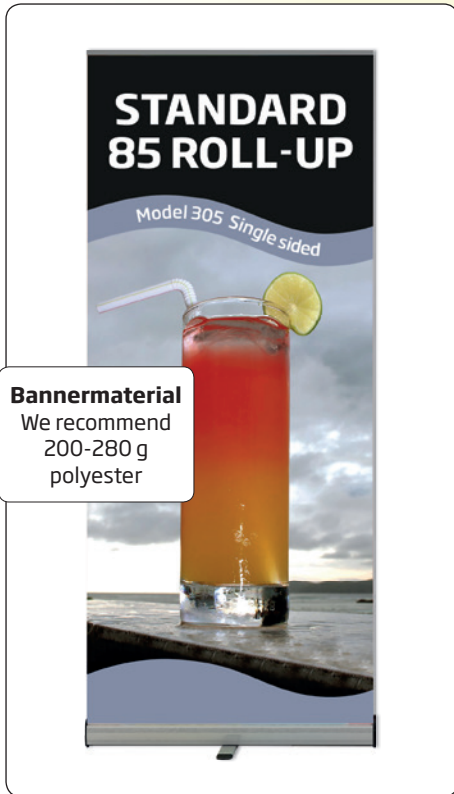


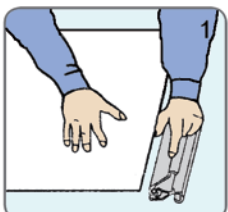
Campaign  
model



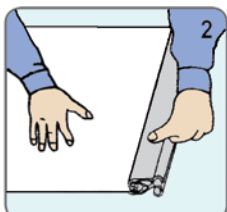
🇬🇧 Lightweight, single sided roll-up - promo version - with one foot. Cassette of thin aluminium. Top profile with clamp and tape on the plastic bottom roller makes it easy to mount the banner. When replacing a message new tape must be mounted. Supplied in black fabric bag. Delivered without banner.

🇩🇪 Einseitiger, leichtes Roll-up - Promo Version - mit einem Fuß. Die Kassette ist aus dünne Aluminium hergestellt. Klemmleiste oben und Klebeband an der Kunststoffrolle ermöglicht eine einfache Montage des Banners. Beim Austausch des Banners muss neues Klebeband montiert werden. Erhältlich mit schwarzer Tasche. Wird ohne Banner geliefert.

🇩🇰 Enkelt-sided letvægts roll-up - kampagne-model - med en fod. Kassetten er fremstillet i tynd aluminium. Topprofil med klemmleste, samt tape på plast bundrulle gør det let at montere banneret. Ved udskiftning af budskab skal ny tape monteres. Leveres i sort stoftaske. Leveres uden banner.



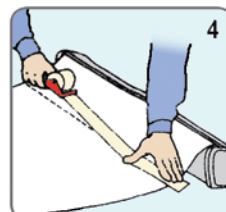
1  
Open the snap clip, insert the top of the graphic into the gap, make the graphic flat.



2  
Close the snap clip.



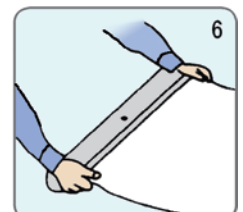
3  
Take the protective film of the adhesive tape. Place the graphic evenly on the leading paper. Use the line as a guideline.



4  
Put adhesive tape on the back of the graphic and on the leading paper, in order to secure the graphic to the leading paper.



5  
Hold the graphic and the roll-up body with one hand tight. Take out the pin at the side while you still hold the graphic, to avoid that graphic suddenly roll into the body too fast.



6  
Make the graphic scroll slowly into the roll-up body by hand.

## Installation instruction

Model	Art.no.	Banner size	Visible Banner	Colour	Total W x H	Package size and weight	Pallet size and quantity
305	4575	85 x 215 cm	85 x 200 cm	Alu silver / black	87 x 212 cm	12 x 89 x 12 cm 2,3 kg	80 x 120 x 220 cm 120 pcs.